
Muni



UNIFORMS

CORPORATE

HOSPITALITY

AVIATION

HEALTHCARE

INDUSTRIAL

www.muniuniforms.com





MUNI

Our Story

In the heart of bustling cities and amid the chaos of modern life, there exists a sanctuary of serenity known as MUNI. Inspired by the tranquil wisdom of the ancient Rishi munis, we embarked on a journey to redefine corporate attire, blending timeless elegance with inner peace.

Our story begins with the humble frog, revered in many cultures as a symbol of transformation and introspection. In our logo, it sits in a poised meditation stance, embodying the essence of tranquility amidst the noise of the world. MUNI isn't just a brand; it's a philosophy—a reminder to embrace stillness in the midst of chaos.

Our garments are meticulously crafted to evoke a sense of calm confidence, empowering individuals to navigate the corporate landscape with grace and authenticity. Each stitch tells a tale of mindfulness, echoing the wisdom of the Rishi munis who sought harmony within themselves and the world around them.

At MUNI, we believe that true success lies not just in outward achievement, but in the peace we cultivate within. As you don our attire, may you embody the spirit of the Rishi muni—poised, centered, and ready to make a difference in the world, one mindful step at a time.

A handwritten signature in black ink, appearing to read "Hilpa B". The signature is fluid and cursive, with a long horizontal stroke at the end.

- From the desk of Managing Director



FAIR TRADE

OUR TRADE VALUE IS BASED ON ETHICS OF TRANSPARENCY, ACCOUNTABILITY, FAIR TRADING PRACTICE, NO CHILD LABOUR OR FORCED LABOUR IN OUR COMPANY ENSURING GOOD WORKING CONDITION, PROVIDING CAPACITY BUILDING, RESPECT FOR ENVIRONMENT. OUR VALUE STAND STRONG ON OUR GIVEN PRINCIPLE.

SUSTAINABLE DEVELOPMENT

MUNI MEETS THE NEED OF THE PRESENT TEXTILE WORLD WITHOUT COMPROMISING THE ABILITY OF FUTURE GENERATION TO MEET OUR NEEDS. OUR GOAL IS ALL AROUND DEVELOPMENT OF HUMAN, SOCIAL ECONOMICAL AND ENVIRONMENTAL DEVELOPMENT THE SUSTAINABLE DEVELOPMENT GOAL ARE THE BLUE PRINT TO ACHIEVE A BETTER AND MORE SUSTAINABLE FUTURE OF ALL.





RESPONSIBLE MANUFACTURING

WITH A RESPONSIBLE MANUFACTURING APPROACH, WE WORK ACROSS ON OUR OPERATIONS FROM RAW MATERIAL SOURCING TO YARN MANUFACTURING, FABRIC MANUFACTURING, WAREHOUSING, GARMENT MANUFACTURING AND FROM DESIGN TO DELIVERY - TO BRING A POSITIVE CHANGE.

AZO FREE DYES (APPROVED BY OEKO-TEX)

ORGANIC DYES IS A SOLUTION PROVIDER OFFERING A BROAD RANGE OF HIGH QUALITY DYES. SPECIALITY CHEMICALS IS USED IN A DIVERSE BASE IN OUR PROCESS HOUSE FOR BEST QUALITY FABRIC.



BREATHABLE FABRICS

OUR FABRIC ARE MADE WITH A RANGE OF PC / COTTON/ VISCOSE YARN. COTTON AND VISCOUS FIBRE ARE BREATHABLE YARN AND THERE FOR SUITABLE FOR ALL WEATHER, BREATHABLE FABRIC ALLOW MOISTURE TO PASS THROUGH, THUS MAKING IT MORE COMFORTABLE TO WEAR ALL SEASON



Serving 100+ Clients Globally

Explore the collaborations that have shaped MUNI Uniforms' journey, working together to bring tranquility and elegance to the corporate world. Our partnerships have allowed us to redefine corporate uniforms and company uniform design, offering a diverse range of uniforms for companies. From creating bespoke professional uniforms and office uniforms to designing corporate uniform designs that embody serenity, each collaboration has enriched our mission.

The Radisson logo is written in a white, elegant, cursive script font. To the right of the word, there is a small, dark square containing a white letter 'E'.

Dainik Jagran

A large, white, stylized letter 'S' logo, partially cut off by the right edge of the image.

Outlook

The logo for BWFS India features a white circular icon on the left, composed of concentric circles and a central dot. To the right of the icon, the text 'BWFS' is written in a large, bold, sans-serif font, with 'INDIA' written in a smaller, spaced-out, sans-serif font directly below it.



hindustantimes

SECURITY FORTUNE
today

दैनिक भास्कर



ROSEATE
HOTELS & RESORTS



and many more..

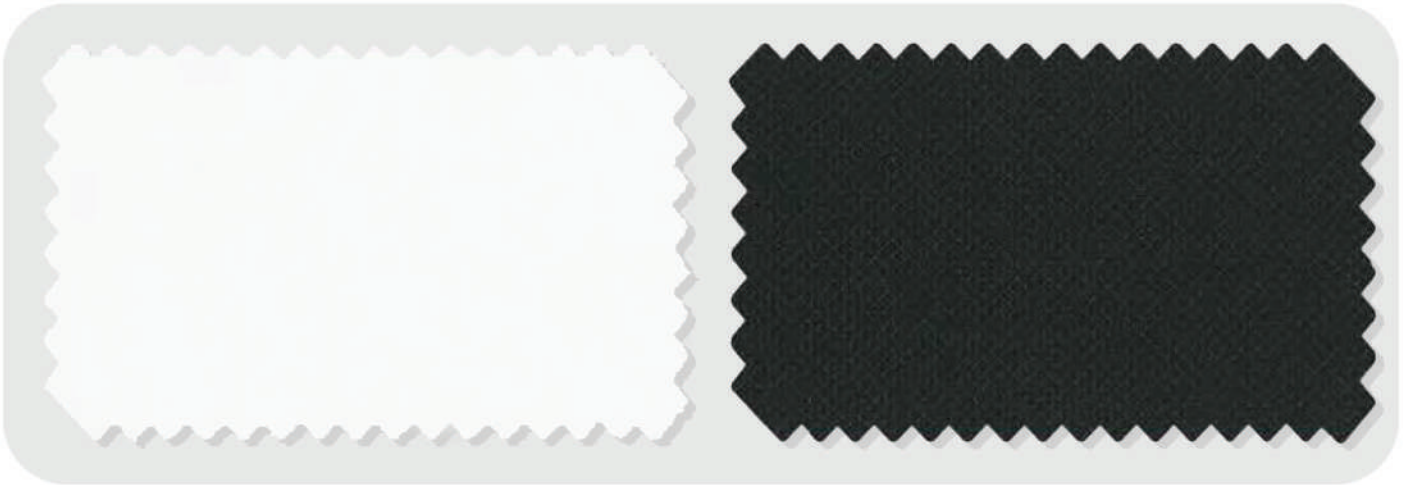


Muni

WHITE CLASSIC COLLAR
SHIRT F/S
(MU-SH-WH-CL-FS)

TROUSER
BLACK
(MU-TR-BK)





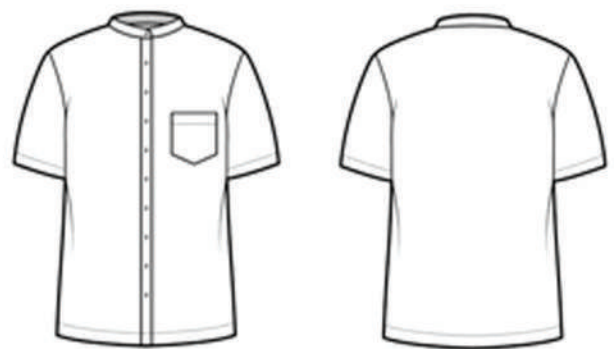
WHITE CLASSIC COLLAR SHIRT F/S
(MU-SH-WH-CL-FS)



WHITE CHINESE COLLAR SHIRT F/S
(MU-SH-WH-CC-FS)



WHITE CLASSIC COLLAR SHIRT H/S
(MU-SH-WH-CL-HS)



WHITE CHINESE COLLAR SHIRT H/S
(MU-SH-WH-CC-HS)



BLUE COLOUR SHADE OPTIONS

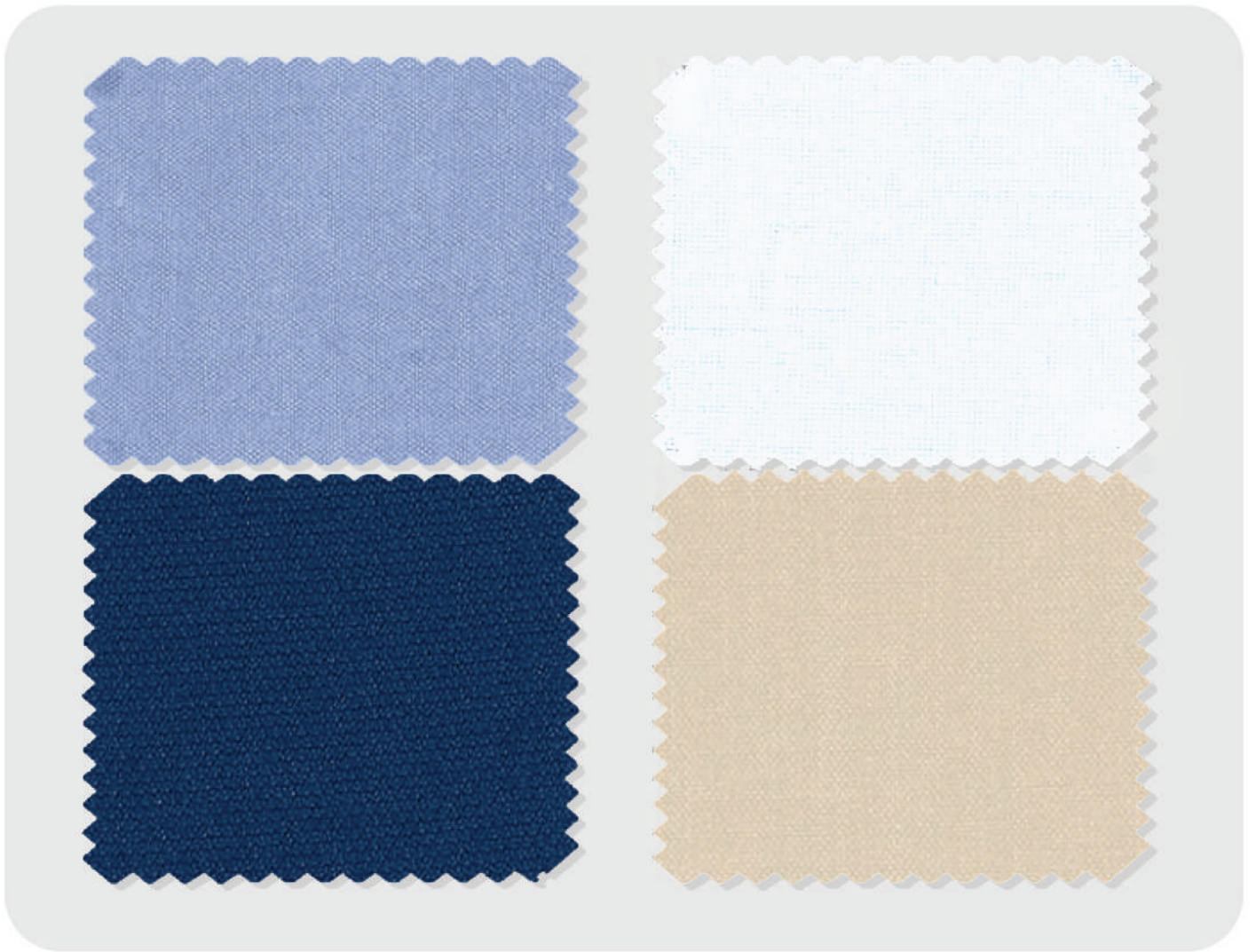
WHITE CLASSIC COLLAR
SHIRT F/S
(MU-SH-WH-CL-FS)

BLUE SHIRT CLASSIC
COLLAR F/S
(MU-SH-BL-CL-FS)

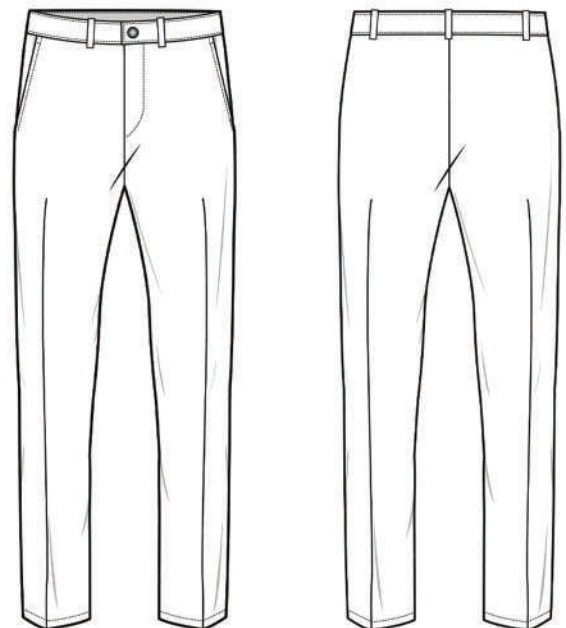
TROUSER
BLUE 1
(MU-TR-BL1)

TROUSER BEIGE
(MU-TR-BG)





MORE SHADES AVAILABLE

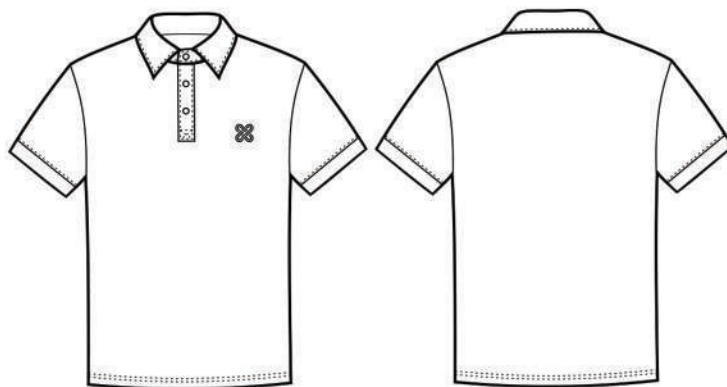


TROUSER BLACK
(MU-TR-BL1)

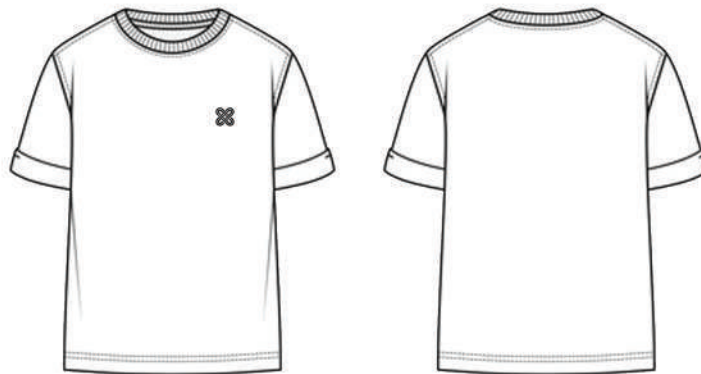


WHITE ROUND COLLAR T-SHIRT H/S
(MU-TSH-WH-RC-HS)

WHITE CLASSIC COLLAR T-SHIRT H/S
(MU-TSH-WH-CL-HS)



WHITE CLASSIC COLLAR T- SHIRT H/S
(MU-TSH-WH-CL-HS)



WHITE ROUND COLLAR T-SHIRT H/S
(MU-TSH-WH-RC-HS)



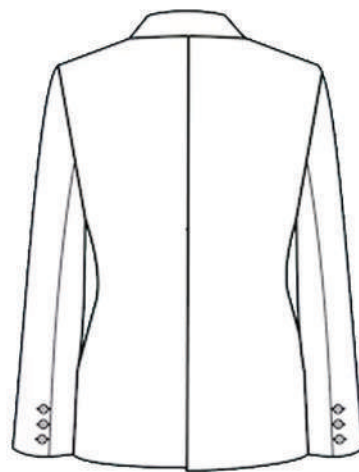
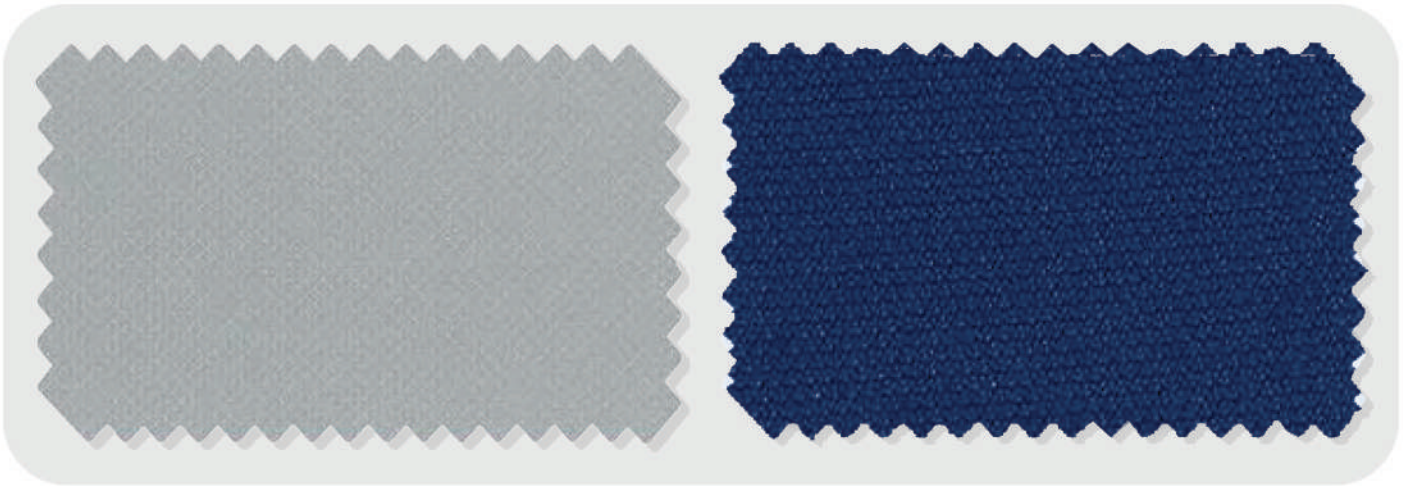
BLUE COLOUR SHADE OPTIONS

GREY SUIT
(MU-SU-GR)

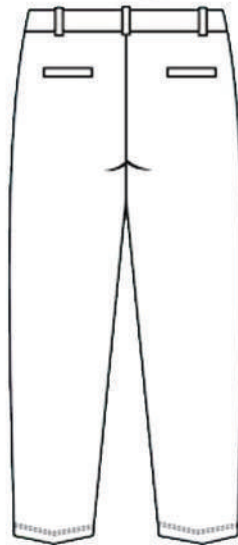
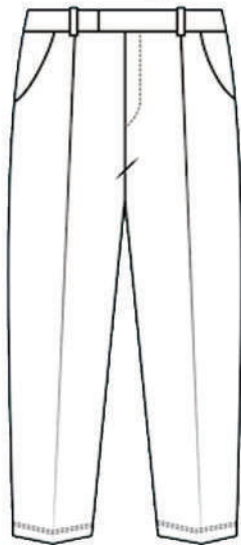


BLUE SUIT 1
(MU-SU-BL1)





TROUSER BLACK
(MU-TR-BL1)

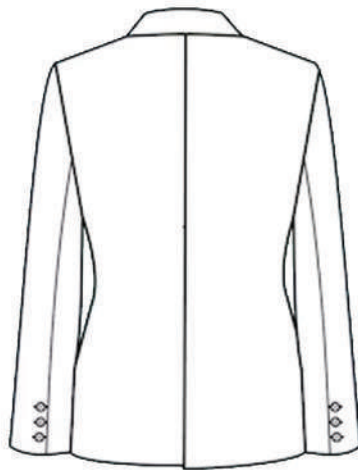
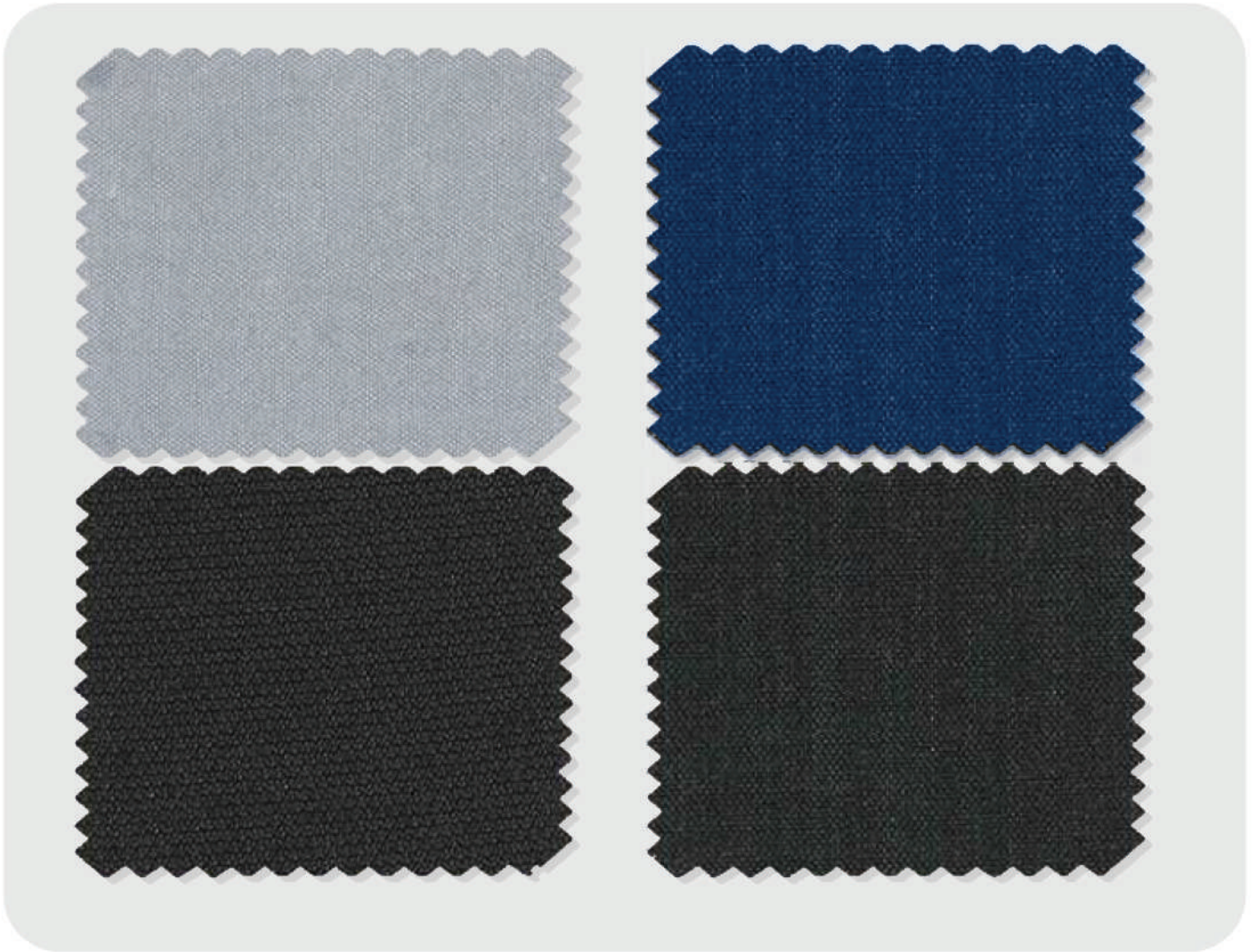


MORE SHADES AVAILABLE

**BLAZER GREY
FEMALE**
(MU-SU-GR-FE)

BLAZER BLUE 1
(MU-BL-BL1)





BLAZER BLUE 1
(MU-BL-BL1)

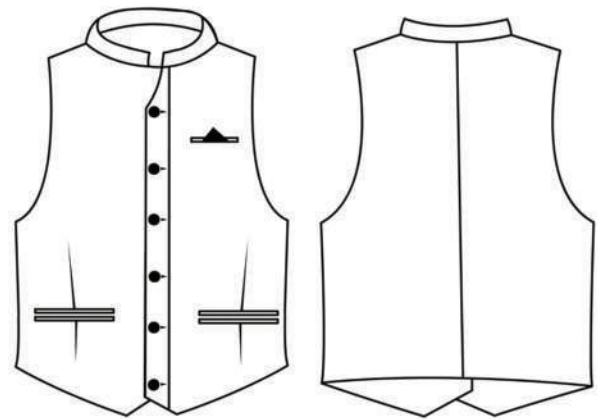
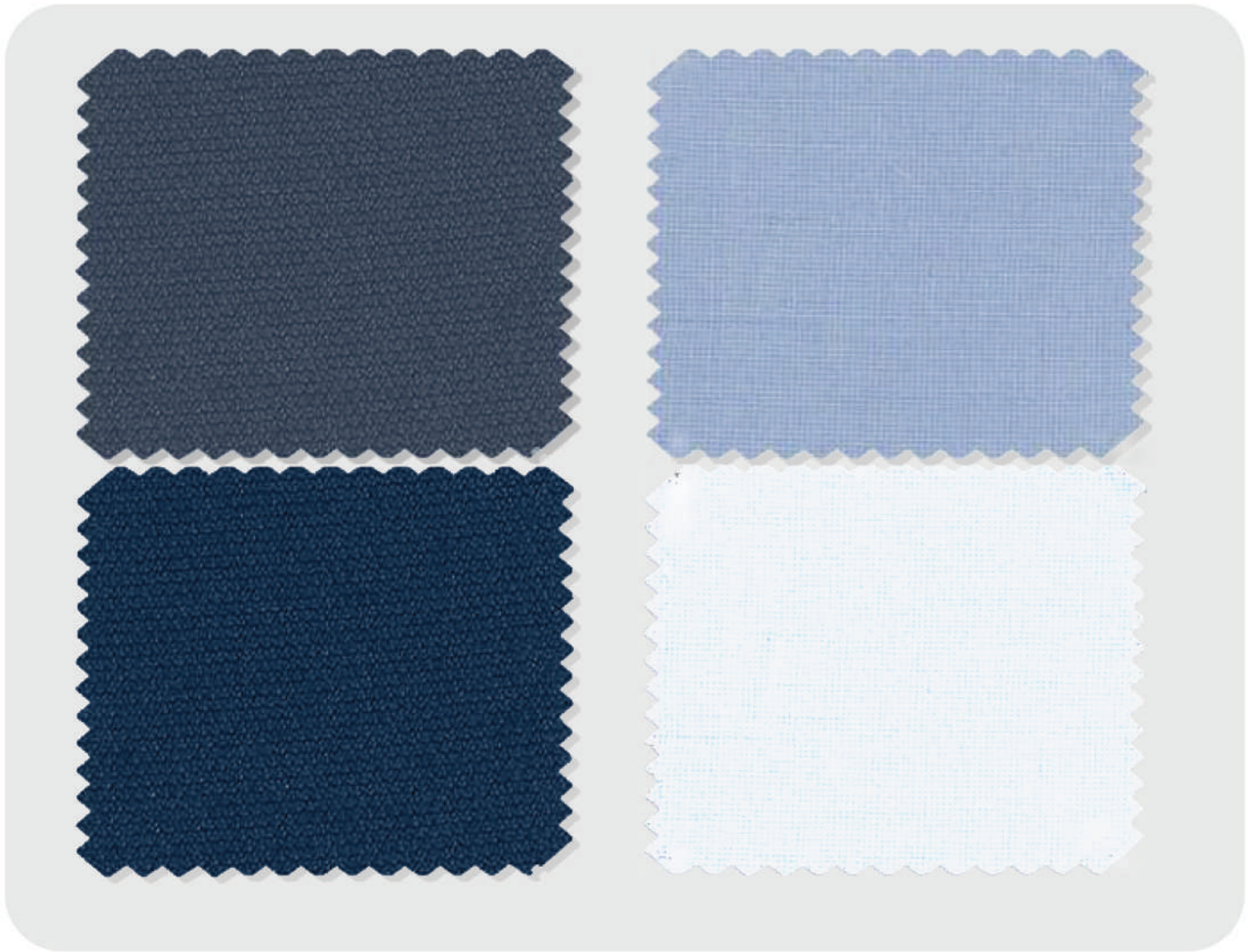


MORE SHADES AVAILABLE



WAIST COAT ROUND COLLAR
(MU-WC-NV-RC)

WAIST COAT V COLLAR
(MU-WC-BL-VC)



WAIST COAT V COLLAR
(MU-WC-BL-VC)

MORE SHADES AVAILABLE

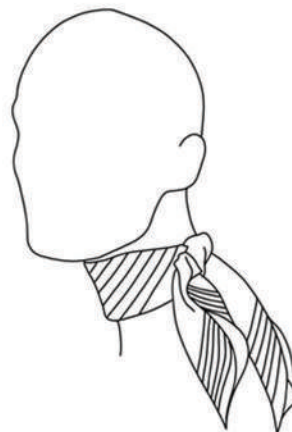


TIE
(MU-TI-BL-WH)

SCARF
(MU-SC-BL)



TIE
(MU-TI-BL-WH)



SCARF
(MU-SC-BL)



MORE SHADES AVAILABLE

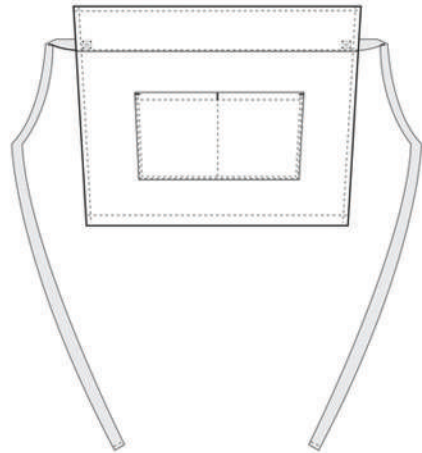


SALON APRON
(MU-SL-BL)

WHITE LADIES CLASSIC COLLAR SHIRT
(MU-SH-FM-WH-CL-FS)



WHITE CHINESE COLLAR SHIRT H/S
(MU-SH-WH-CC-HS)



SALON APRON
(MU-SL-BL)



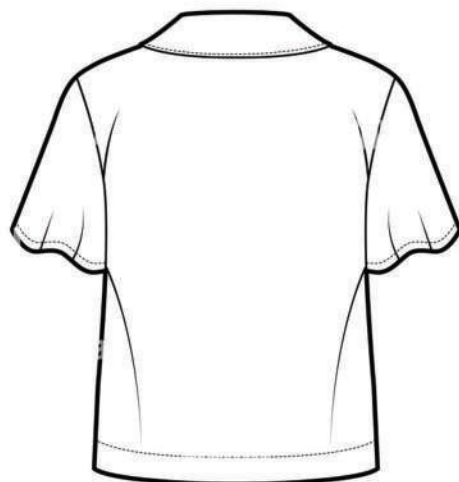
WHITE LADIES CLASSIC COLLAR SHIRT F/S
(MU-SH-FM-WH-CL-FS)



MORE SHADES AVAILABLE



HOUSEKEEPING UNIFORM
(MU-CA-BL-1P)



WHITE LADIES CLASSIC COLLAR OVERSIZED SHIRT
H/S
(MU-SH-FM-WH-CC-HS)

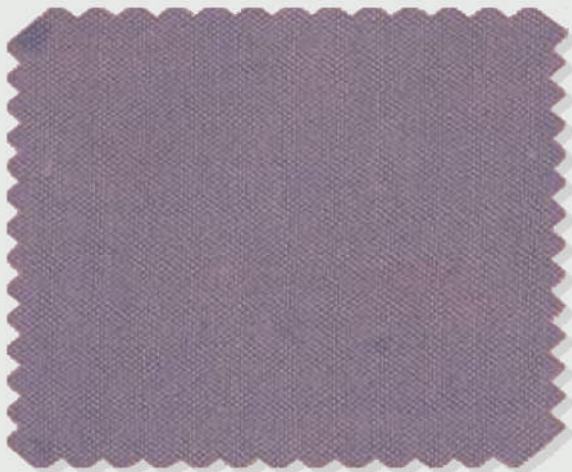


MORE SHADES AVAILABLE

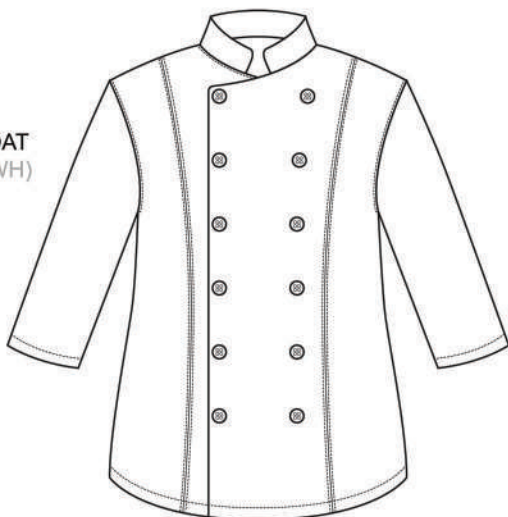


CHEF COAT
(MU-CC-WH)

CHEF APRON
(MU-AP-BG)



CHEF COAT
(MU-CC-WH)



CHEF APRON
(MU-AP-BK)

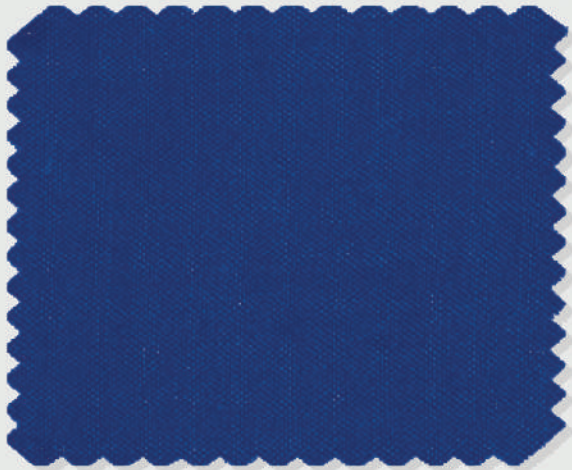


MORE SHADES AVAILABLE

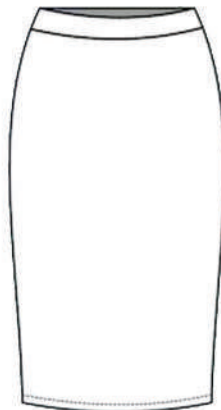
Muni

AIR HOSTESS UNIFORM
(MU-AH-BL-2P)

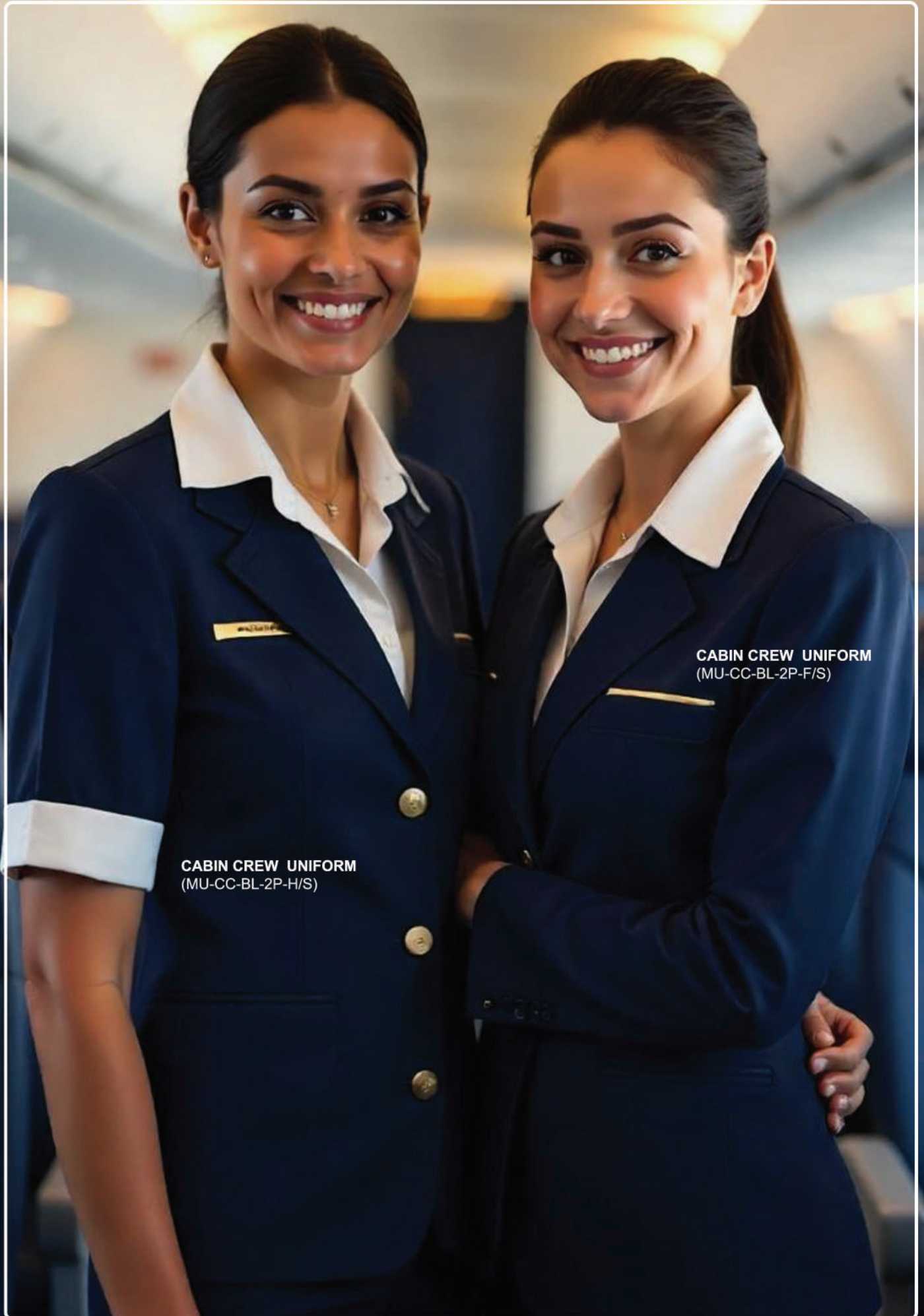




AIR HOSTESS UNIFORM
(MU-AH-BL-2P)

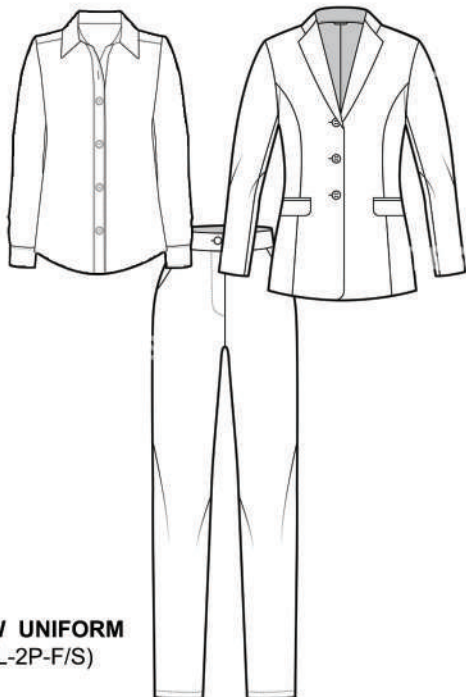


MORE SHADES AVAILABLE



CABIN CREW UNIFORM
(MU-CC-BL-2P-H/S)

CABIN CREW UNIFORM
(MU-CC-BL-2P-F/S)



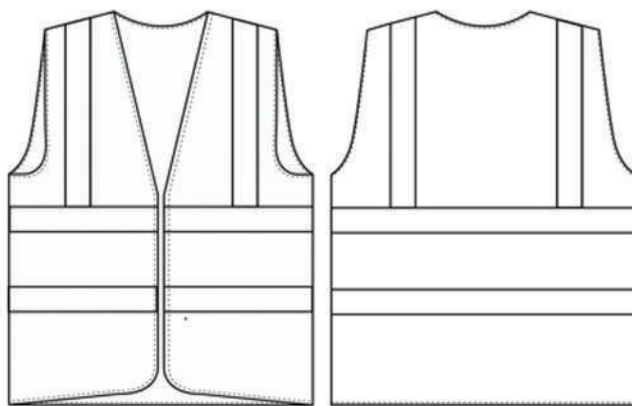
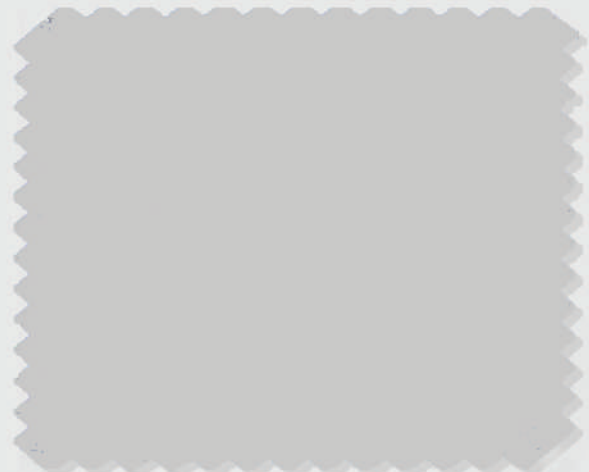
CABIN CREW UNIFORM
(MU-CC-BL-2P-F/S)



MORE SHADES AVAILABLE



REFLECTIVE VEST H/S
(MU-RV-OR-H/S)



REFLECTIVE VEST H/S
(MU-RV-OR-H/S)



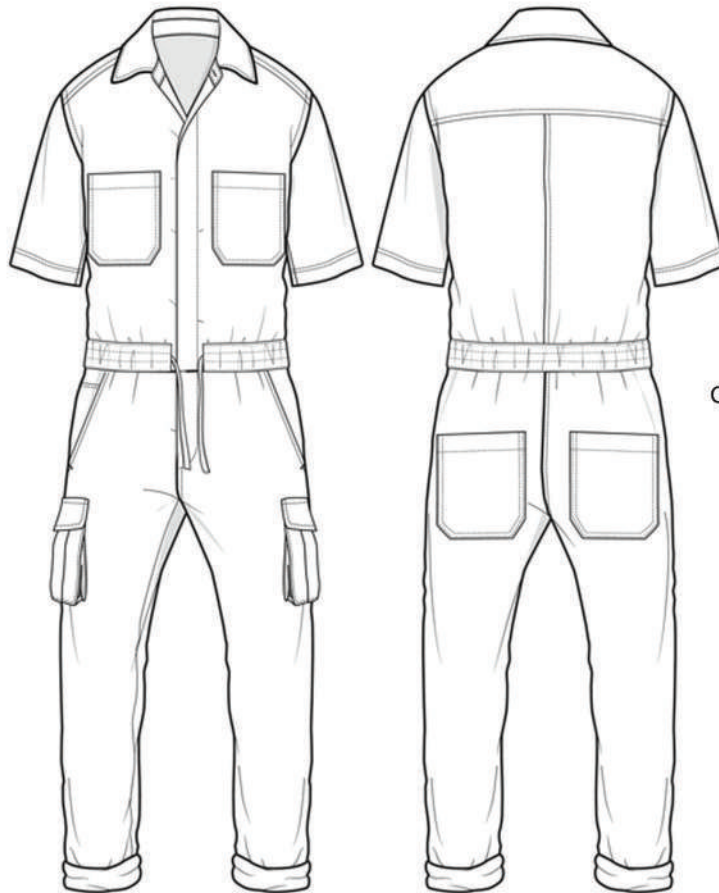
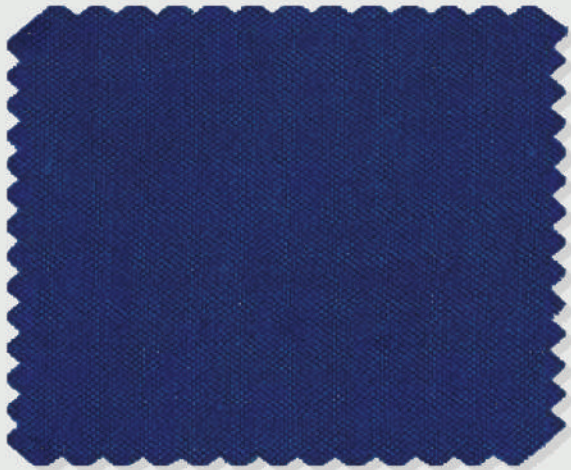
MORE SHADES AVAILABLE

Muni



COVERALL ONE PIECE
(MU-CA-BL-1P)





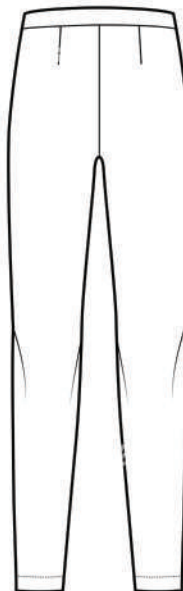
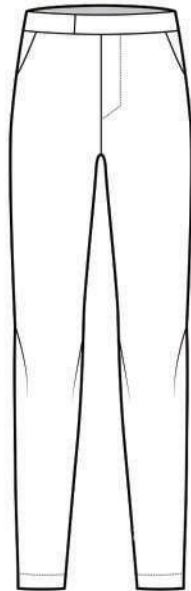
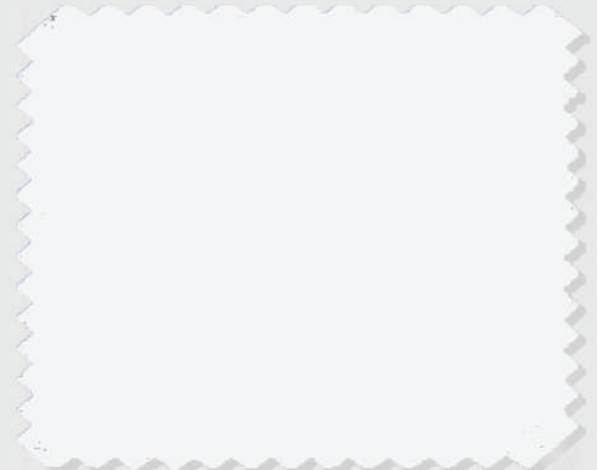
COVERALL ONE PIECE
(MU-CA-BL-1P)



MORE SHADES AVAILABLE

SPA UNIFORM
(MU-SP-WH-2P)





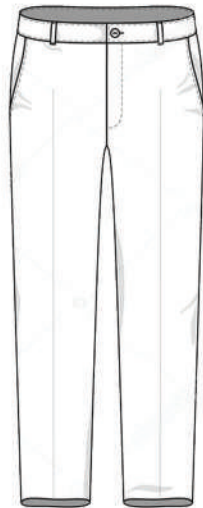
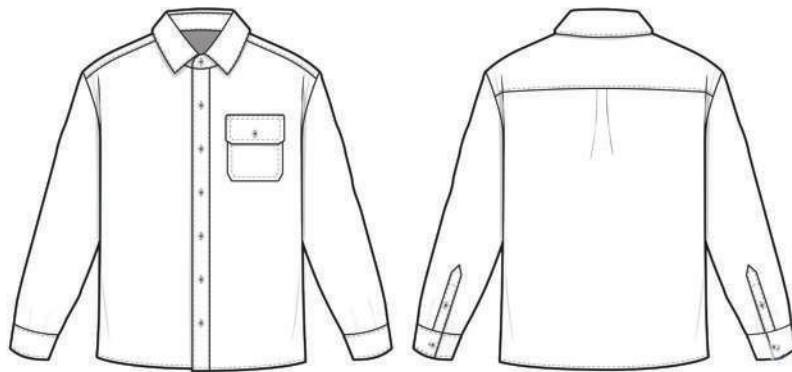
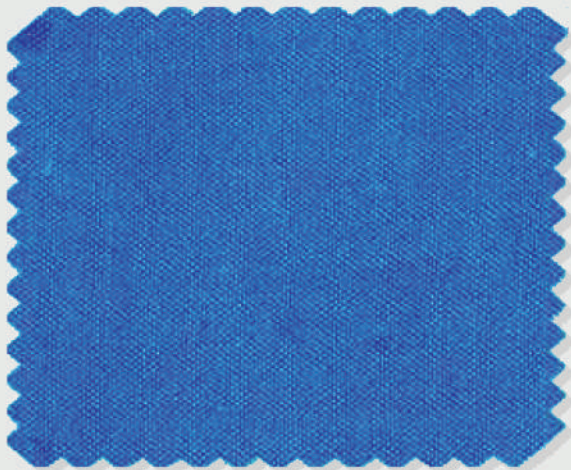
SPA UNIFORM
(MU-SP-WH-2P)



MORE SHADES AVAILABLE



GARDENER UNIFORM
(MU-GU-RB-2P)



GARDENER UNIFORM
(MU-GU-RB-2P)



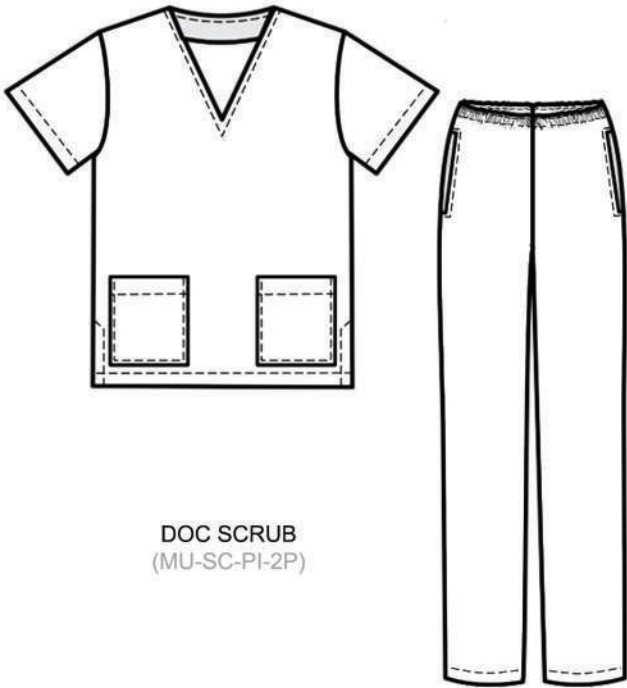
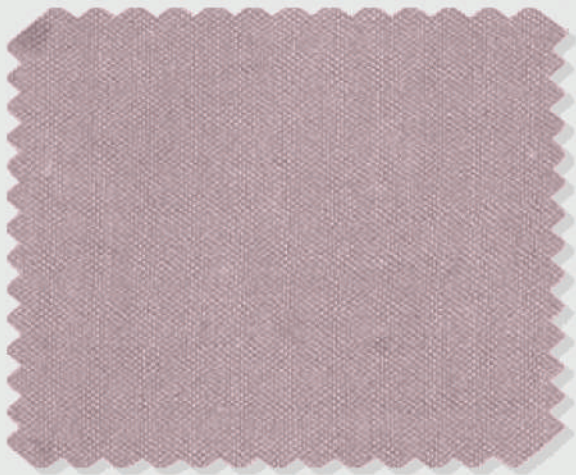
MORE SHADES AVAILABLE

Muni

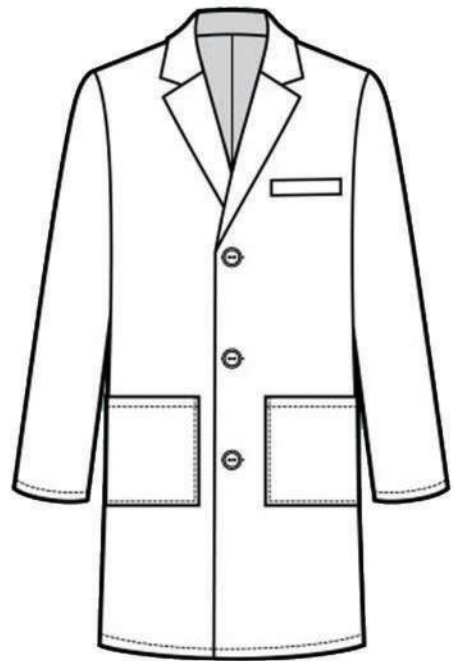
DOC LAB COAT
(MU-CO-WH)

DOC SCRUB
(MU-SC-PI-2P)





DOC SCRUB
(MU-SC-PI-2P)

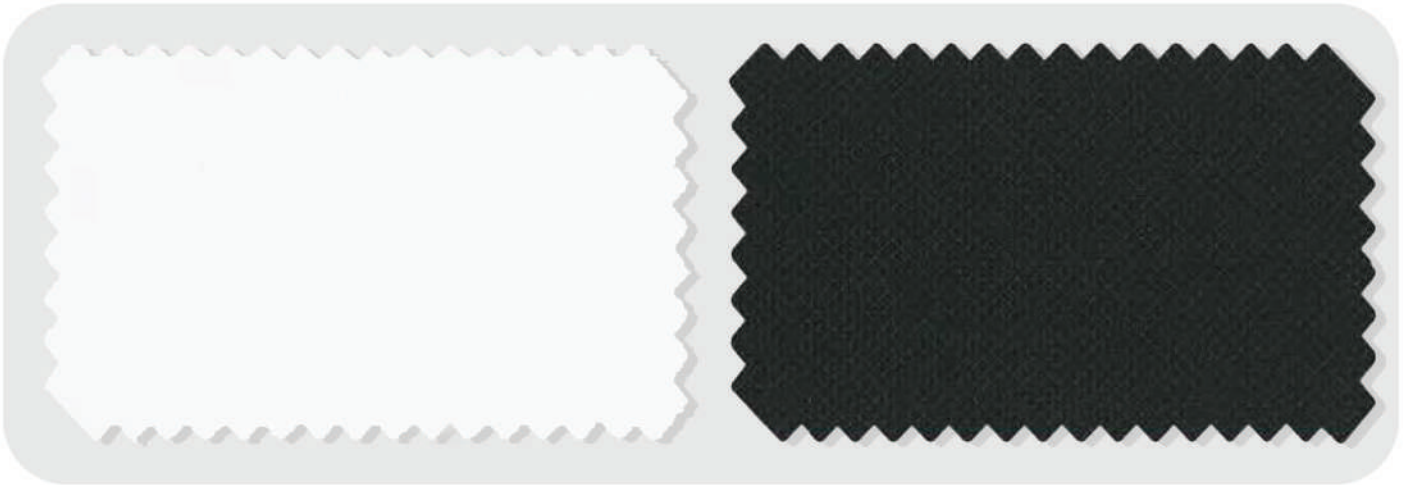


DOC LAB COAT
(MU-CO-WH)

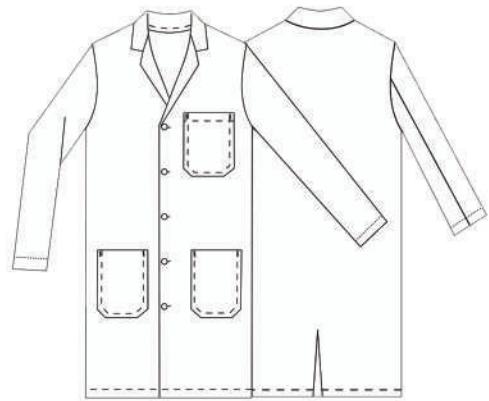


MORE SHADES AVAILABLE





LONG LENGTH DOCTOR COAT (41")
(MU-CT-WH-LL-2P)



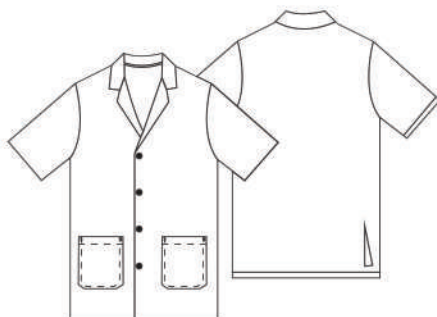
LONG LENGTH DOCTOR COAT (41")
(MU-CT-WH-LL-3P)



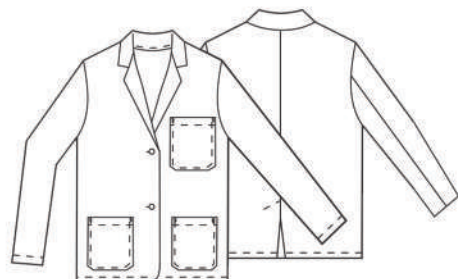
MID LENGTH DOCTOR COAT (35")
(MU-CT-WH-ML-2P)



MID LENGTH DOCTOR COAT (2P) (35")
(MU-CT-WH-ML-3P)



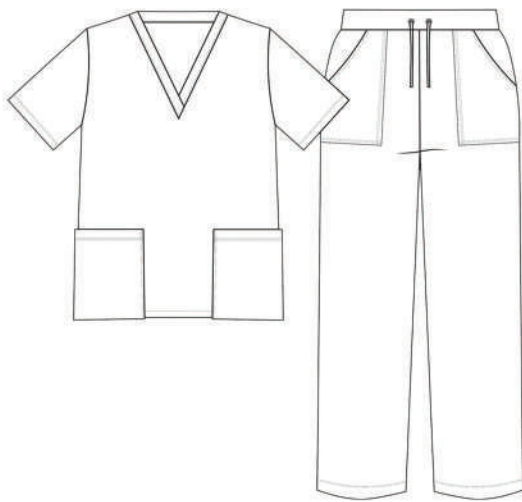
CONSULTATION DOCTOR COAT (30")
(MU-CT-WH-SL-2P)



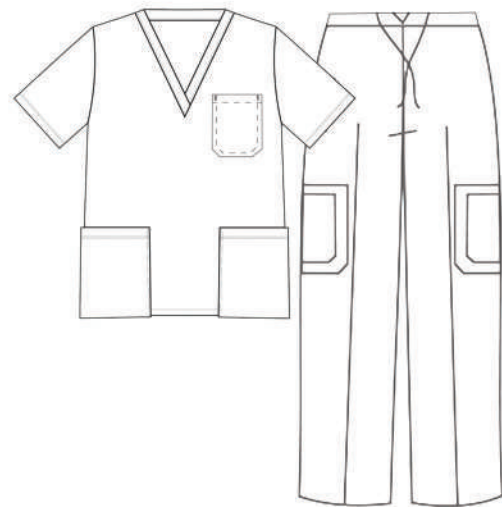
CONSULTATION DOCTOR COAT (30")
(MU-CT-WH-SL-3P)

Muni





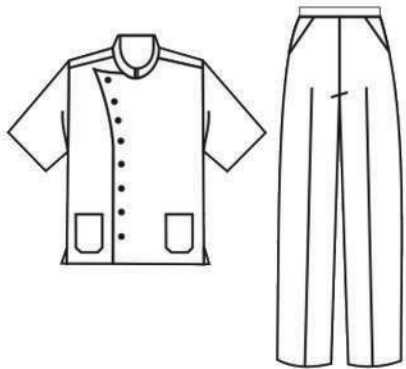
2 POCKET SCRUB SUIT
(MU-SS-CL-HS-2P)



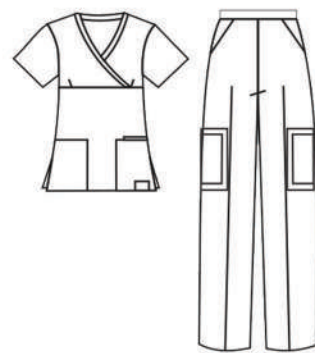
3 POCKET SCRUB SUIT
(MU-SS-CL-HS-3P)



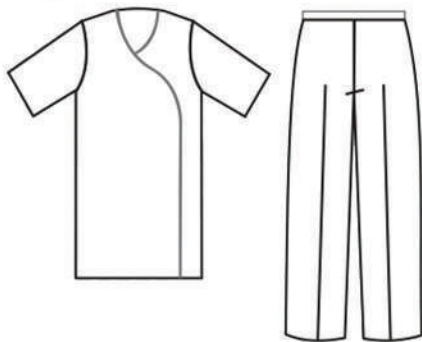




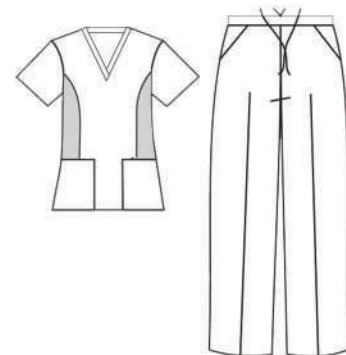
WOMAN'S CROSS OVER COAT WITH BUTTON
(MU-CO-BT-HS)



WOMAN'S MOCK WRAP SCRUB SUIT
(MU-MW-SS-HS)



WOMAN'S CROSS OVER LONG SCRUB SUIT
(MU-CO-LL-HS)



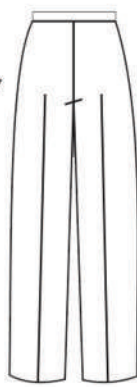
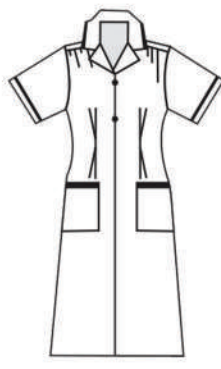
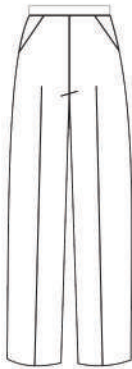
WOMAN'S NOTH NECK FLEX SCRUB SUIT
(MU-NN-SS-HS)



MORE SHADES AVAILABLE

Muni





NURSE UNIFORM WAIST LENGTH
(MU-SH-WH-CL-HS)

LONG COLLARD NURSE DRESS
(MU-SH-WH-CL-FS)

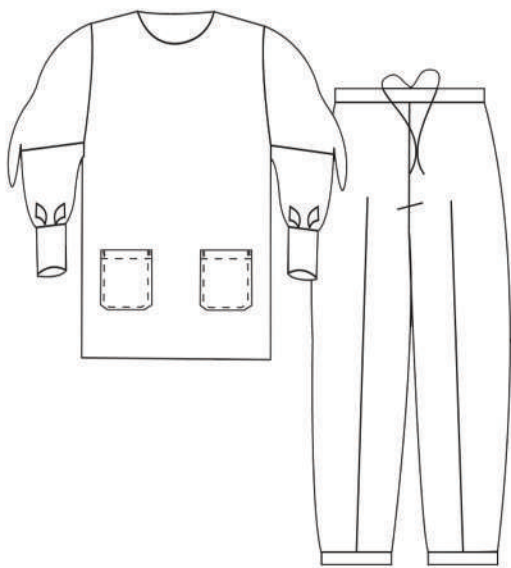
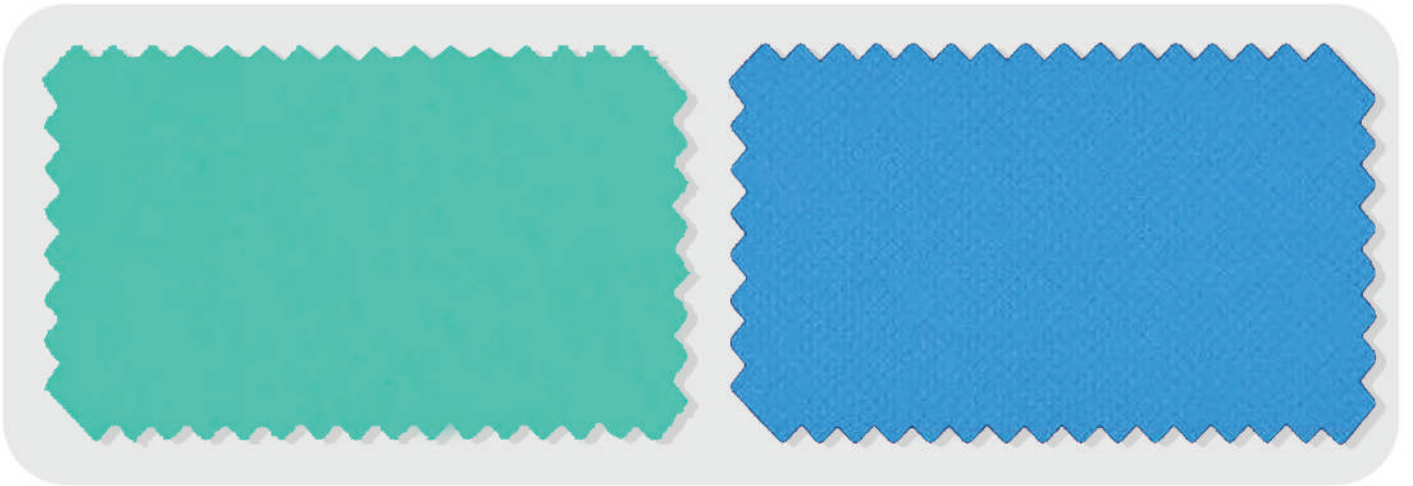
LONG FLARED NURSE DRESS
(MU-SH-WH-CL-FS)



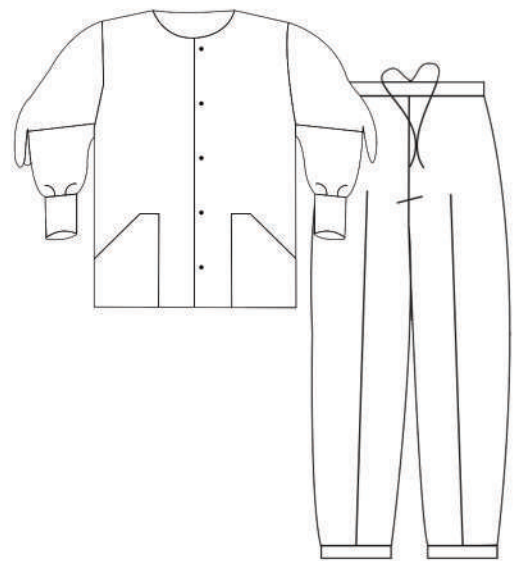
MORE SHADES AVAILABLE

Muni





LONG SLEEVE SCRUB SUIT WITH RIB
(MU-SS-RB-FS)



LONG SLEEVE SCRUB SUIT WITH BUTTONS
(MU-SS-RB-FS-BT)



Why

MUNI Uniforms?

Commitment to Quality

MUNI prioritizes quality in every uniform, adhering to government regulations and industry standards to ensure garments meet the highest expectations for durability and design. Our uniforms undergo rigorous testing to guarantee top-tier performance, giving our clients peace of mind. This commitment to quality is central to everything we do, ensuring long-lasting satisfaction.

Sustainability Focus

MUNI integrates eco-friendly practices into its operations, aligning with the global shift towards sustainability and delivering environmentally responsible products to meet growing demand. We source sustainable materials and implement energy-efficient production methods to reduce our environmental footprint.

Contact us today:
www.muniuniforms.com
contact@megabags.net
+91-9910677841

Strict Compliance with Specifications

MUNI ensures every garment surpasses industry expectations by following all required specifications and continually improving manufacturing processes and quality control. We work tirelessly to stay updated on evolving regulatory requirements. This dedication helps us maintain consistent quality across all product lines, ensuring reliability for every client.

Innovation and Durability

MUNI invests in innovative manufacturing techniques, producing uniforms that are stylish, resilient, and capable of enduring daily wear while maintaining a pristine appearance. By integrating cutting-edge technology into our processes, we create uniforms that stand out in both form and function.

Adherence to Industry Best Practice

MUNI stays ahead of corporate attire trends by aligning with industry best practices, delivering top-notch uniform solutions that reflect the latest standards and designs. We continuously research and innovate to ensure that our offerings remain at the forefront of corporate wear fashion.

Tailored Corporate Attire Solutions

MUNI collaborates with clients to create uniforms that reflect their brand identity and values, ensuring uniforms enhance their professional image while meeting practical needs. We provide personalized design consultations to craft unique uniforms that resonate with each client's vision.

#muni



Office Premises No. C-24, DSIDC Kirti Nagar Industrial Area, New Delhi, Delhi, 110015 |
No.: +91-9910677841 | +91-9810739465 | Website: www.muniuniforms.com | Email: sb@megabags.net
